

## DIN 4102-1 Annex B

### DIN 4102-1 Annex B



#### DIMENSIONS

Width x depth x height: 2000 x 600 x 1850 mm\*  
Weight: approx. 150 kg\*

#### SUPPLIES

Electric current 230 VAC 50/60 Hz  
Propane gas  
Compressed air

#### TO BE PROVIDED BY THE CUSTOMER

Exhaust air system DN 250

#### SPATIAL REQUIREMENTS

Air velocity at the installation site  $\leq 0,5$  m/s



#### SCOPE

The test device DIN 4102-1 Annex B is used to determine the reaction to fire of building materials.

#### PRINCIPLE

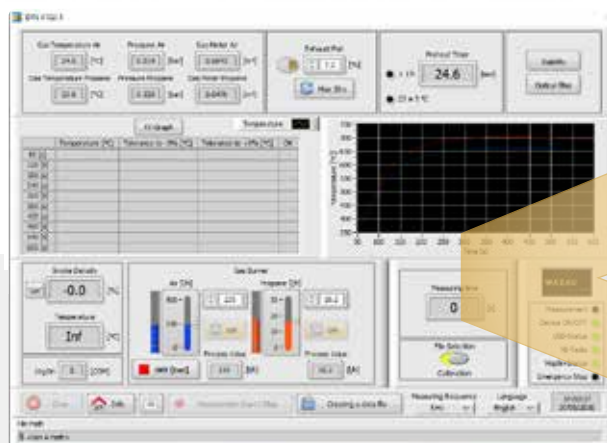
Material samples are exposed to a defined flame. The resulting smoke density is measured with an electronic light measurement system.

#### FEATURES

The supply of propane gas and compressed air to the test equipment is electronically regulated and controlled. The test procedures are logged and controlled by means of a PC and the associated DIN 4102-1 software.

#### SCOPE OF DELIVERY

Frame with test chamber, light measurement section and purge tube  
Control cabinet  
PC with monitor, keyboard and mouse  
Anemometer  
2 calibration devices  
Software DIN 4102-1, Labview based, operating system MS Windows 10



\* Our products are constantly evolving. For this reason, the actual dimensions may differ.  
© 10/2021